



395 Columbia Green

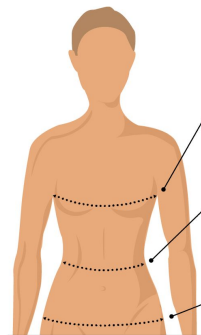
LADIES OPTI-DRI CHEV POLO

CGW555 S – XXXL MSRP \$58.00*



APPAREL

- 5.3 oz. 95% Polyester / 5% Spandex jersey knit fabric
- Opti-Dri technology transfers moisture away from the body to keep you cool and dry
- UV Repel technology keeps skin safe from the sun's harmful rays UPF 50
- Stretch fabric moves with you to increase your range of motion
- Rib knit collar and 5-button placket with Callaway embossed buttons
- Double needle hemmed bottom with side vents
- Princess seam detail stitching on back for a feminine look
- Heat seal label provides tag-free comfort
- Tonal embroidered Chevron on back neck



†Sizes are based on your actual nude body measurements.

Bust

With your arms relaxed at your side, measure the bust line at the fullest part of your chest.

Waist

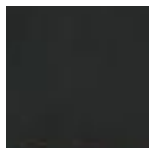
Measure around your torso at the smallest part of your waist.

Hips

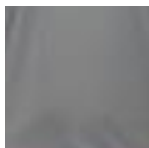
Wrap a measuring tape around your body at the fullest part of your bottom.

| Size† | Number Size | Bust | Waist | Hips |
|-------|-------------|---------|---------|---------|
| XS | 2 | 33 | 25½ | 35½ |
| S | 4-6 | 34½-35½ | 26½-27 | 37½-38½ |
| M | 8-10 | 36½-37½ | 28-29 | 39¼-40¼ |
| L | 12-14 | 38¾-40¾ | 30¾-32½ | 41¾-43¼ |
| XL | 16 | 42-43 | 33½-35 | 45-47 |
| XXL | 18 | 44 | 37-38 | 47-48 |
| XXXL | 20 | 46 | 40-42 | 48-52 |

* Prices apply to sizes S – XL. Please inquire for pricing on larger sizes



001 Black



039 Quiet Shade



100 White



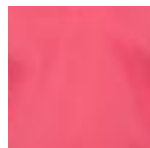
395 Columbia Green



410 Peacoat



446 Blue Atoll



653 Very Berry



762 Lemon Zest



625 Salsa



826 Bird of Paradise